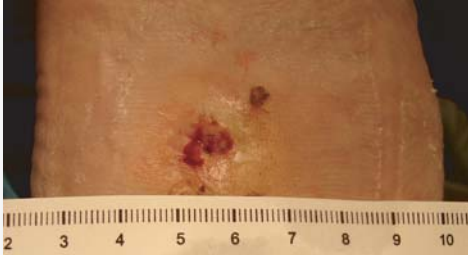


Case Study - Diabetic

Week 0



Diabetic Ulcer Wagner Grade 4 (Plantar Foot) onset: Oct 2005
Non-healing wound result from surgery to correct Charcot deformity.
Study Begin: Jan 26, 2006
Wound Dimensions: 0.3 cm², 0.6 cm depth (VisiTrak®)
Dressing applied: SelectSilver™, gauze, Hypafix™. Outer dressing changed daily.
Moderate drainage.

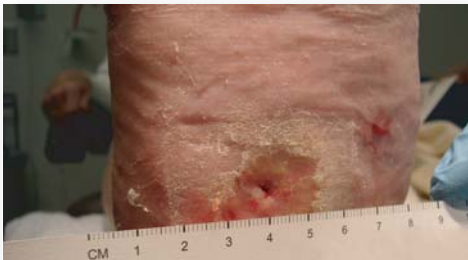
Week 1



Date: Feb 2, 2006
Wound Dimensions: 0.1 cm², 0.4 cm depth (VisiTrak®)
Dressing applied: SelectSilver™, gauze, Hypafix™. Outer dressing changed daily.

Mild drainage. Callous pared to reveal viable tissue.

Week 2



Date: Feb 9, 2006
Wound Dimensions: 0.1 cm², 0.5 cm depth (VisiTrak®)
Dressing applied: SelectSilver™, gauze, Hypafix™. Outer dressing changed daily.

Mild drainage. No drainage through outer dressing. Callous removed to reveal this small wound.

Week 4



Date: Feb 23, 2006
Wound Dimensions: wound healed
Dressing applied: none

Callous pared to reveal healed wound.