

Case Study - Atypical

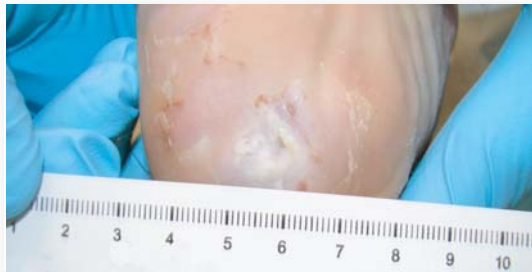
Week 0



Heel Ulcer - onset: Sept 2005
 Reoccurring chronic draining heel ulcer with history of MRSA and other resistant bacteria infection. No dressing treatments have had effect. Several regiments of antibiotics.

Study Begin: March 13, 2006
 Wound Dimensions: 0.1 cm², 0.1 cm depth (VisiTrak[®])
 Dressing applied: SelectSilver[™], gauze, Kerlix[®]. Leave on for 7 days.
 Suspected infection. Moderate drainage, high pain, some odor, macerated. Patient to take antibiotics.

Week 1



Visit Date - March 20, 2006
 Wound Dimensions: 0.8 cm², 0.1 cm depth (VisiTrak[®])

Dressing applied: SelectSilver[™], gauze, Kerlix[®] and Coban[™].
 Leave on for 7 days.
 No sign of infection. Moderate drainage, no pain, no odor, still macerated, but a bit less.

Week 3



Visit Date - April 3, 2006
 Wound Dimensions: 0.1 cm², 1.2 cm depth (VisiTrak[®])

Dressing applied: SelectSilver[™], gauze, Kerlix[®] and Coban[™].
 Leave on for 7 days.
 Mild drainage, no pain, no odor, still macerated, but getting better.

Week 4



Visit Date - April 10, 2006
 Wound Dimensions: 0.1 cm², 1.0 cm depth (VisiTrak[®])

Dressing applied: Mepitel[®], SelectSilver[™], gauze, Kerlix[®]. Leave on for 7 days
 Copious drainage, no pain, no odor, still macerated, but less.
 Patient off study. Physician will continue to use SelectSilver[™] due to wound improvement.